

CARING FOR LIFE

—
Cipla Foundation
in Baddi
2022



 / ciplafoundation

Cipla Ltd, Village Upper Malpur, P.O. Bhud, Baddi, Dist. Solan Pin 173205, Himachal Pradesh

To know more about our CSR initiatives in Baddi, please write to us at info@ciplafoundation.com

@Cipla Foundation 2022. All rights reserved. Names changed for representational purposes only.



About Cipla Baddi

The Cipla Baddi unit in Himachal Pradesh was inaugurated in 2005 and is situated in an expansive industrial zone that houses over 2500 factories of pharma, Fast Moving Consumer Goods (FMCG) and textile companies. The Baddi facility occupies 13 acres and specialises in the manufacturing of tablets, hard gelatin capsules, pellets, rotacaps and Metered Dose Inhalers (MDIs).

Our site in Baddi is amongst Cipla's 40+ manufacturing units around the world. Cipla is a global pharmaceutical company that produces 50+ dosage forms and 1,500+ products. We are committed to ensuring access to high quality and life-saving medicines.



I speak for every Ciplaite when I say that we are united in our quest to care for every life. Through our Foundation, we support initiatives that advance access to quality healthcare and education. I am proud to be a volunteer and am inspired by our communities every day.

Geena Malhotra

Global Chief Technology Officer

About Cipla Foundation

Cipla's vision for an equitable world is built on the foundation of 'Caring for Life.' At Cipla, we recognise the importance of building long-term relationships with all our stakeholders and working collaboratively to achieve positive social change. Our work in the community is carried out through Cipla Foundation. The Foundation works with credible institutions, NGOs, government agencies and domain experts to enhance the outreach of our CSR initiatives.

Cipla Foundation works across four focus areas: Health, Education, Skilling and Disaster Response.

WE WORK ACROSS INDIA

In **15+**
States

With **50+**
Partners

Across **100+**
Towns and Villages



We Envision:

An equitable world, built on the foundation of 'Caring for Life'

We work across four key thematic areas



HEALTH



EDUCATION



SKILLING



DISASTER RESPONSE

Leader's Speak



Our Foundation is 'Caring for life' in action. In partnership with local NGOs, we transform lives by skilling youth, supporting access to quality education, and putting health services within the reach of underserved communities. I am proud of the work we have done in keeping families and communities together, especially during the COVID-19 pandemic.

Ashwin Upasane
Site Head



Every year, we strengthen our initiatives to truly mirror the values of Cipla and strive to take compassionate care closer to communities.

Together with our partners, we have been working to bring quality health, skilling and education within the reach of vulnerable communities.

Anurag Mishra
Head, Cipla Foundation



Cipla's social initiatives in Baddi began in 2010

The Foundation is currently working across

50+

Villages

20+

Schools

12+

Gram
Panchayats

40,000+

Students



HEALTH

Driving Healthcare Home

Launched in partnership with HelpAge India in 2014, our Mobile Healthcare Unit (MHU) provides free-of-cost primary healthcare to the doorstep of vulnerable and under-served areas across 16 villages.

The MHU has a doctor, pharmacist and social protection officer providing healthcare consultations that include diagnosis, treatment and referrals for patients especially women, children and the elderly. In addition, the MHU drives awareness of preventive measures and creates linkages between communities and the Government health system.



62-year-old Amrita suffers from diabetes and would often skip her medication in the past. The choice was either medicines or some money to save for her family and she would choose the latter. With the MHU coming to her community, she has been able to take her medicines regularly as she gets it free of cost. She consults the doctor on board and that helps her manage any new symptoms.

Amrita Devi
Baddi



Vocational Training and Employment Generation

With the Skill & Entrepreneurship Development Institute (SEDI), we support job-linked skill training and employment opportunities for the youth. The training focuses on technical and functional skills along with life skills and computer applications. At SEDI's training centre in Nalagarh, we support aspiring youth to enroll into locally relevant vocational training courses.

2021-22

450
youths skilled



When Roshani Kumari's husband was diagnosed with a heart ailment, she took on the role of the breadwinner. She enrolled herself in the sewing machine operator course at our centre. After the training, she began working at a tailoring unit and started her own tailoring shop within a year. Today, she earns enough to support her family and pay for her husband's medical treatment.

Roshani Kumari
Baddi



EDUCATION

Digital Learning Education & Development (D-Lead)

With a goal to make education inclusive and equitable for all children, we launched a digital literacy initiative. D-Lead gives a seamless digital learning experience to students by providing tablets pre-loaded with content in regional languages for class 10, structured to the state board curriculum.

Distributed to children from government and government-aided schools near Cipla units, this initiative advances the government's National Education Policy which emphasises digital education. During COVID-19, this digital access gave our children the tools to continue learning even as schools remained closed.



2021-22

950
students and
teachers from
13 schools
supported
with tablets

The tablet helped me learn even when schools were closed for more than a year. I missed classroom interactions but could still do my lessons. It was a relief on days when we could not step out and do things we regularly did. The lessons were engaging, and it has helped me prepare for my exams. I scored so much better than last year especially in maths and science. I am so excited to continue learning with my tablet.

Anjali Kumari
Baddi

Balvatika (Pre-schools)

Early childhood education builds the foundation for learning and growth in the future. Together with the Himalayan Social Institute and in line with the National Education Policy 2020, we have been supporting the Balvatika initiative since 2014 for children in the age group of 2-5 years living near Cipla Baddi.

Early childhood education as modeled by the Balvatika is an important step for children as they transition into formal schooling.

2021-22

160+
children
reached



Before coming to the Balvatika, 5-year-old Himanshu would accompany his mother to where she worked and stay there till her shift ended. Himanshu's mother was helpless, there was no one at home she could leave her child with and missing one day of work would mean a loss of wages. The Balvatika in her neighbourhood was just what she needed – Himanshu was now in a safe and enriching environment, playing with children of his age and eating nutritious meals.

ACROSS INDIA

Recognising merit since 2009

Every year, we give **merit awards** to children from communities and schools in and around our Cipla units. This is a long-standing and valued tradition that salutes the spirit and hard work of the students. Against all odds, these children strive for excellence and we encourage and applaud their efforts.

While the top three students receive this award at a special ceremony to felicitate them and honour their teachers, it is an equally important day for every single person in attendance. Most of the awardees are first-generation learners and consider this award as a wonderful recognition of their efforts and a way to continue their education.

Ciplaites come together at these ceremonies with great pride to award the winners and congratulate their teachers. Our admiration for the children, their families and teachers is acknowledged and expressed, making these events memorable for all.

2021-22

Across India,
we felicitated
570+
students



ACROSS INDIA

Standing Strong for Communities in COVID-19

In collaboration with our NGO partners and the local administration, we provided support to frontline workers, healthcare staff, patients, students and communities, reaching out to **3,50,000+** people across India, helping communities recover and emerge stronger. We continued our COVID-19 support by providing:

2021-2022

100+
oxygen concentrators, ventilators and COVID-19 equipment

1,50,000+
masks, PPE kits and protective gears

1,00,000+
people vaccinated across India

50,000+
rapid antigen kits

Supporting Health Department for COVID-19 Vaccination



In collaboration with NGO partners and the local administration, we provided support to local health authorities to ramp up vaccination efforts in the Barotiwala-Baddi Nalagarh industrial area.

This support helped vaccinate **38,900+** community members.



Continuing to Learn in COVID-19

Despite schools closing due to the COVID-19 pandemic, students and teachers from schools near Cipla units continued to learn through WhatsApp, videoconferencing and audio sessions with support from our partners.

10,000
children engaged

Continued Care during COVID-19

Mobile Healthcare Units continue to reach the last mile

With stringent safety protocols, the Mobile Healthcare Units continued reaching locations with free-of-cost medicines for patients with chronic conditions.

1,800+
health consultations during the COVID-19 lockdown

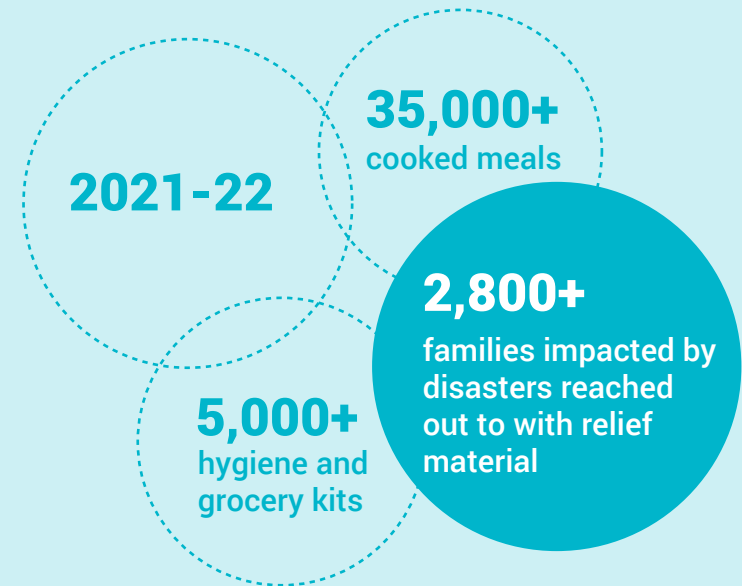


ACROSS INDIA

Disaster Response

Standing by communities in natural disasters
Building resilience for the future

We support communities with immediate relief during natural disasters. In 2021- 2022, our work included flood relief in Tamil Nadu and Kerala, shelter and relief material distribution for the Mumbai landslide, as well as support during the Mahad and Chiplun floods. In Odisha, in collaboration with HelpAge India and the local administration, we distributed hygiene kits, face masks and dry ration during Cyclone Yaas.



Cipla Palliative Care & Training Centre, Warje, Pune

Rooted in our legacy of care for the last 25 years

The diagnosis of a serious illness makes relentless physical, emotional and financial demands, not only on patients but also on their loved ones. It was to support them in their most difficult times that **Cipla founded the Palliative Care & Training Centre in 1997 in Warje, Pune**. Since then, we have served over **20,000 patients and their families** free of cost.

Today, we have **24 partners** across **18 cities** in India providing palliative care services. Together, we launched the **Saath Saath** helpline (**1800-202-7777**). This national toll-free number is staffed by trained palliative care volunteers who listen, assess, and link callers to the nearest palliative care provider. **Saath Saath** could make all the difference to someone who might be in pain and needs support. We hope that everyone will play their part in spreading awareness about the helpline.



Cipla for Change

Ciplaites across India shared their time and skills for causes they felt most passionately about

Caring is deeply ingrained in our DNA and our compassionate approach towards people, the planet and purpose have been the force driving our history over the years. At Cipla Foundation, we endeavour to serve the communities in collaboration with like-minded partners and institutions.

Umang Vohra

Managing Director & Global CEO

2021-22

9,500 employees
23,000 volunteering hours